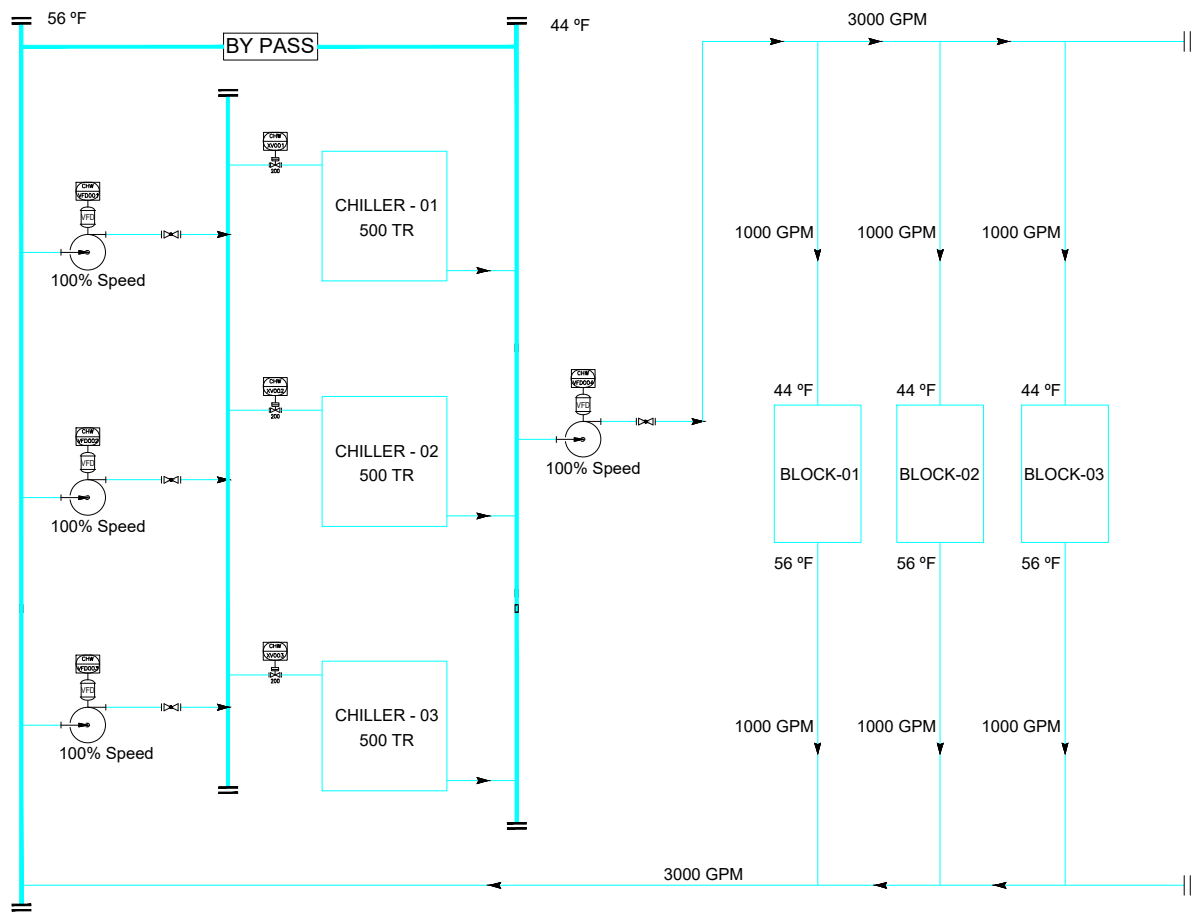
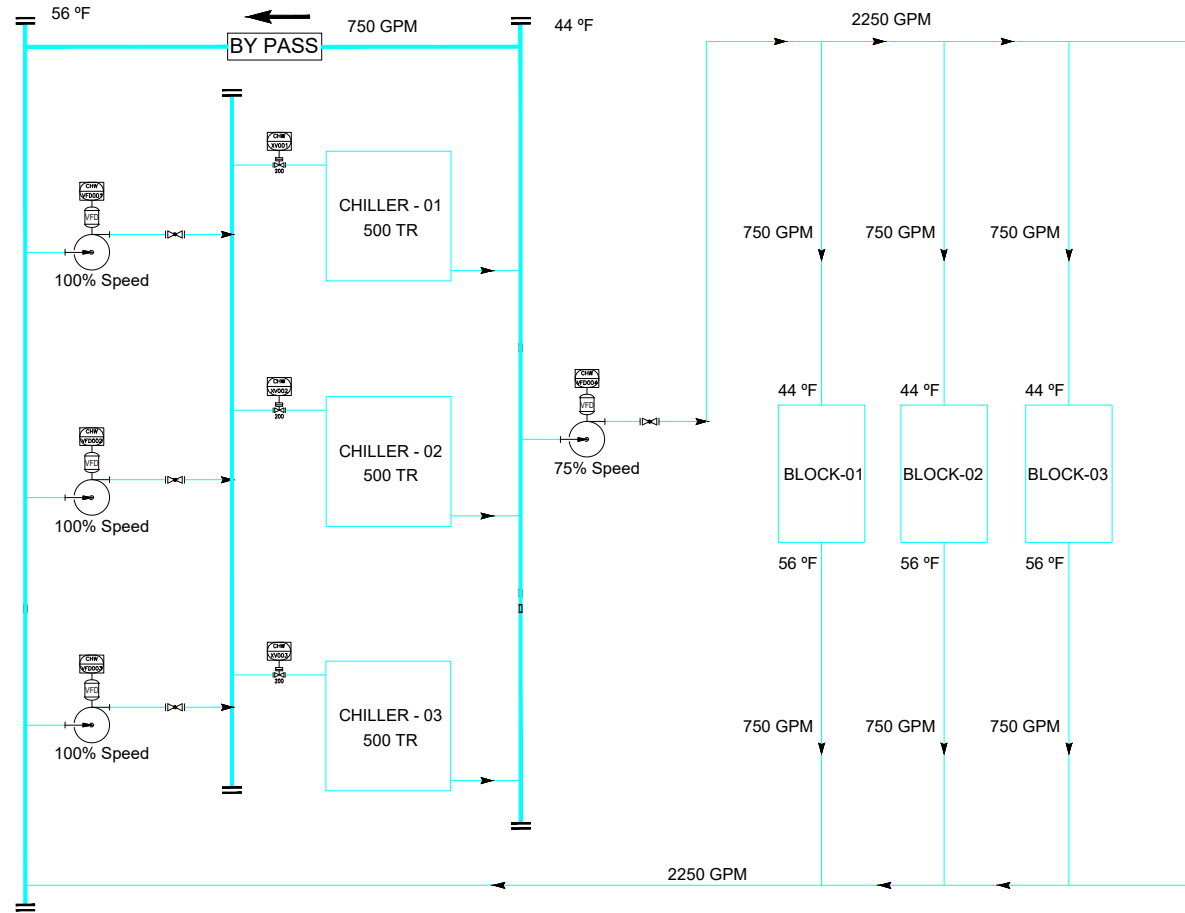


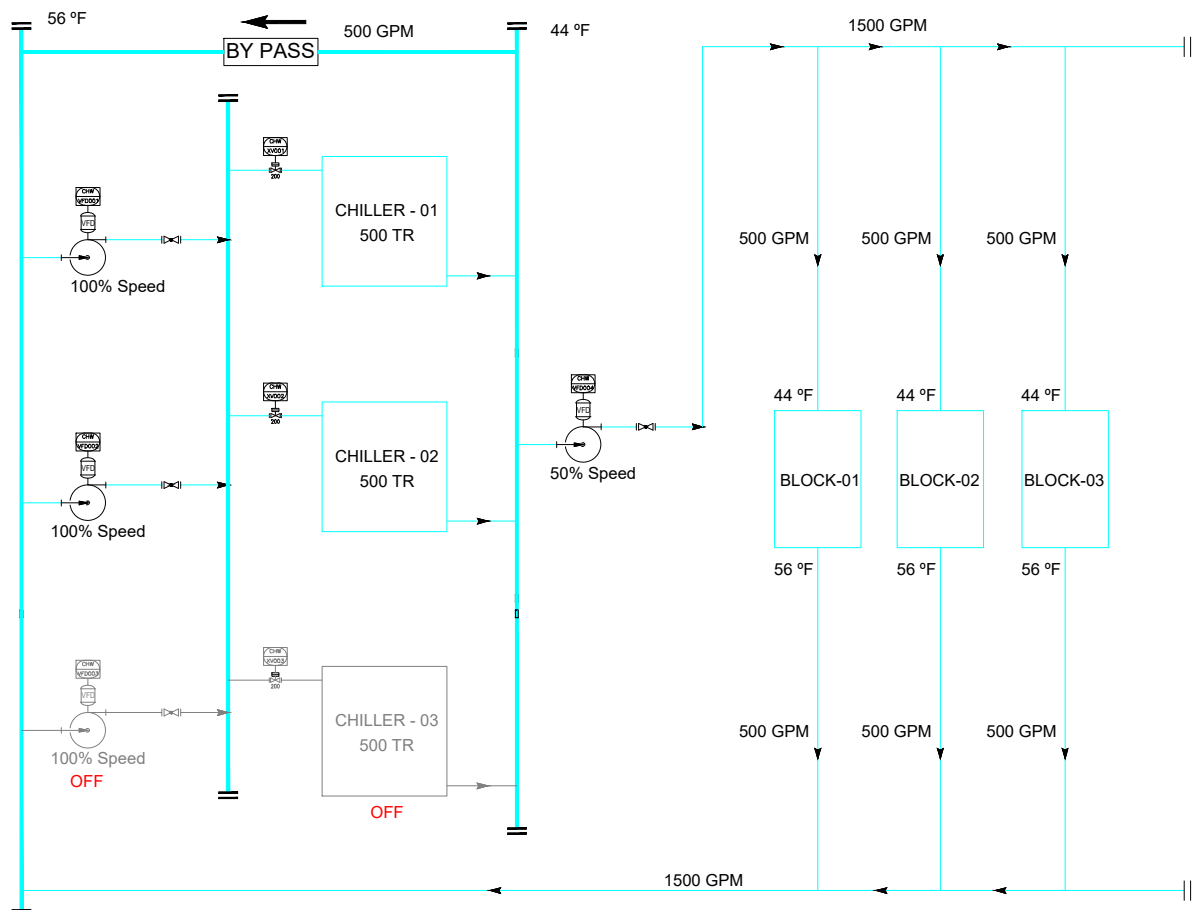
CONSTANT PRIMARY/VARIABLE SECONDARY FLOW-100% LOAD



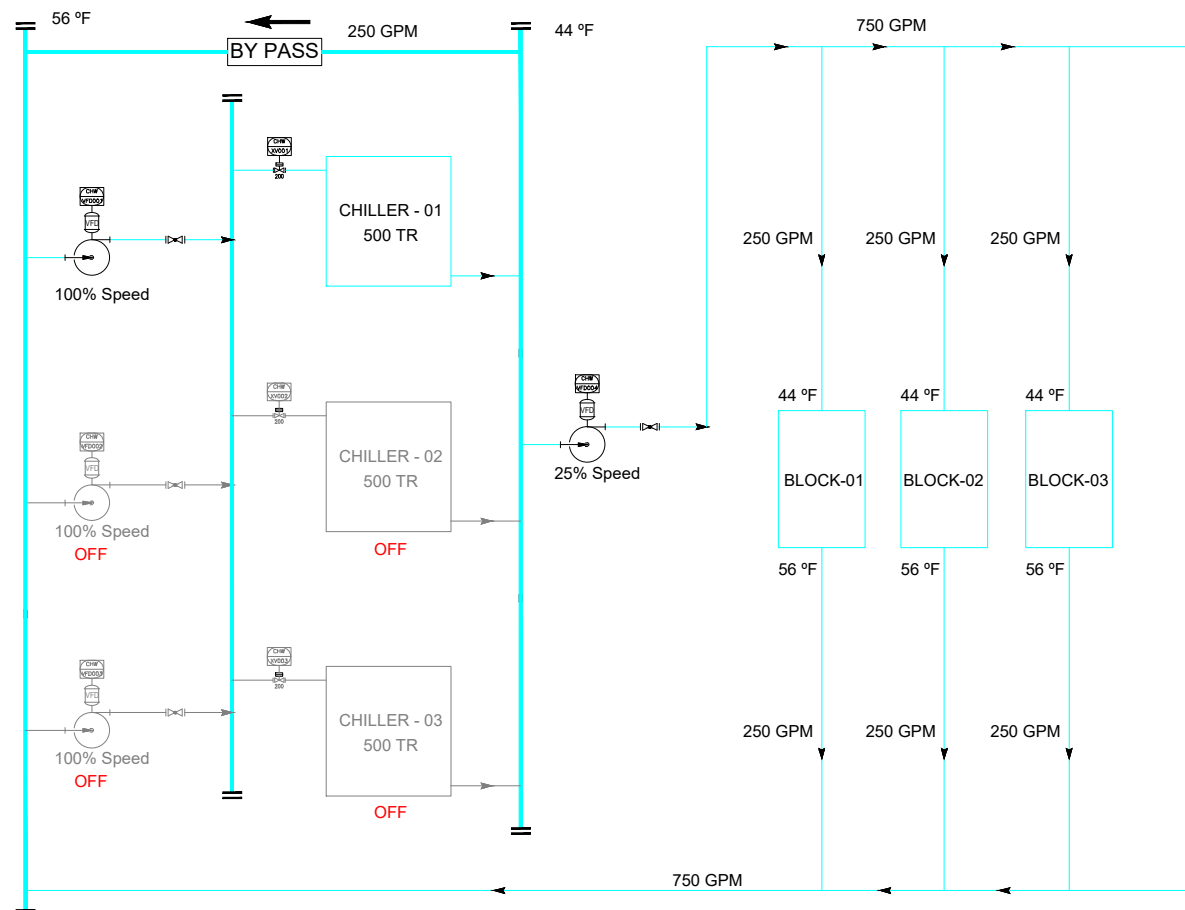
CONSTANT PRIMARY/VARIABLE SECONDARY FLOW-75% LOAD



CONSTANT PRIMARY/VARIABLE SECONDARY FLOW-50% LOAD



CONSTANT PRIMARY/VARIABLE SECONDARY FLOW-25% LOAD



COMMENTS:-
1. Control Valves must be 3 Way