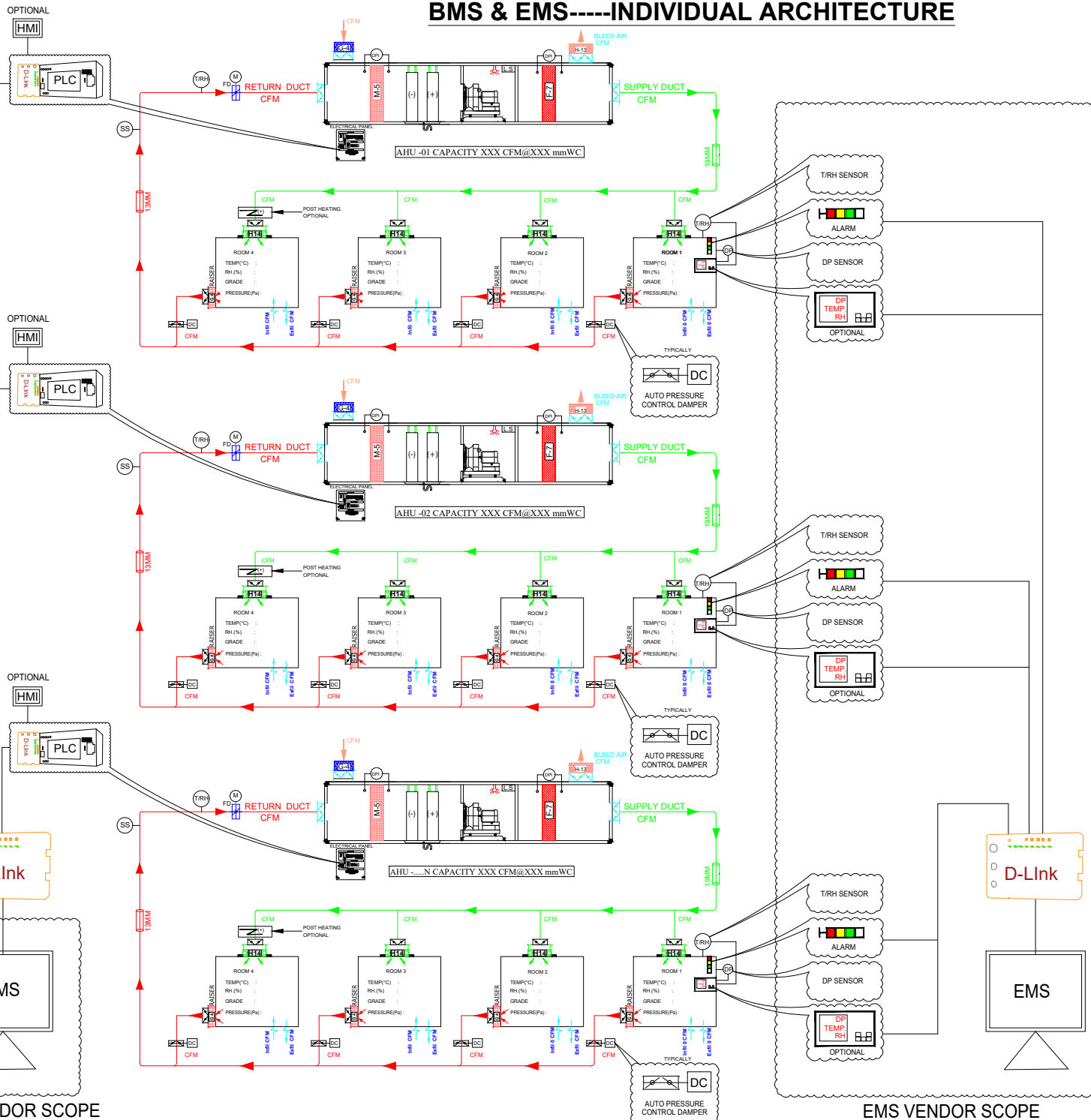


BMS & EMS-----INDIVIDUAL ARCHITECTURE

TCP/IP PROTOCOL

TCP/IP PROTOCOL
TCP/IP PROTOCOL



SET POINTS POSSIBLE FROM HMI (OR) SCADA:-

1. ON
2. OFF
3. FREQUENCY
4. CFM
5. RETURN AIR TEMPERATURE
6. RETURN AIR RH
7. ABSOLUTE PRESSURE OF ROOM

COMMUNICATION FROM AHU PLC VIA MODBUS TCP/IP PROTOCOL:-

1. AIRFLOW
2. RETURN AIR TEMPERATURE
3. RETURN AIR RH
4. ABSOLUTE PRESSURE OF ROOM
5. CHILLED WATER-IN TEMPERATURE
6. CHILLED WATER-OUT TEMPERATURE
7. HOT WATER-IN TEMPERATURE
8. HOT WATER-OUT TEMPERATURE
9. COOLING LOAD
10. HEATING LOAD
11. STATIC PRESSURE
12. EFFICIENCY

BMS VENDOR SCOPE

EMS VENDOR SCOPE

CLIENT:-SUGGESTIVE DRAWING

PROJECT:-

PR PHARMA ENGINEERS PVT. LTD.
PLOT.NO:113/A/1,LANE.NO:8,PHASE-II,
IDA,CHERLLAPALLY,HYDERABAD-51

TITLE: BMS & EMS INDIVIDUAL ARCHITECTURE DWG NO: PE/RF/02/1

DRN BY	CHK BY	APPD BY	DATE	REV.
KARTIK	PR		04.06.24	R0