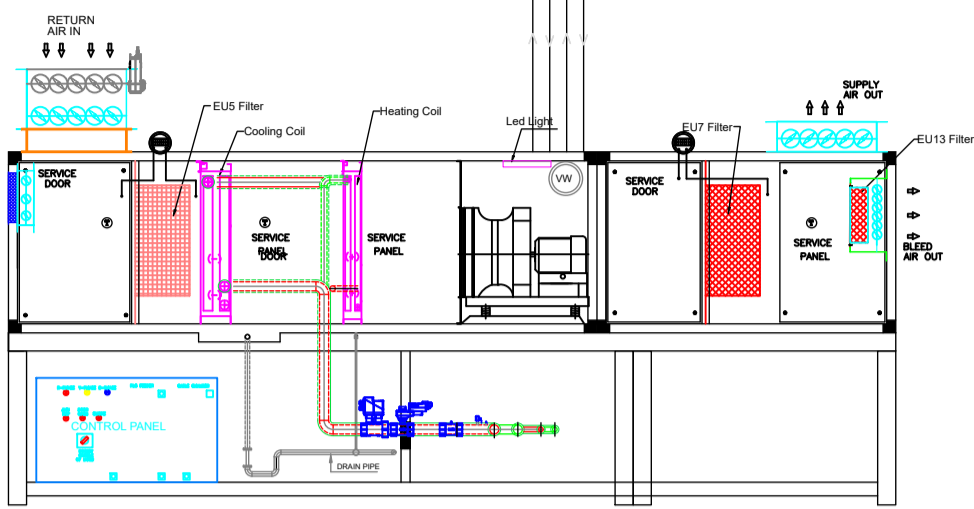


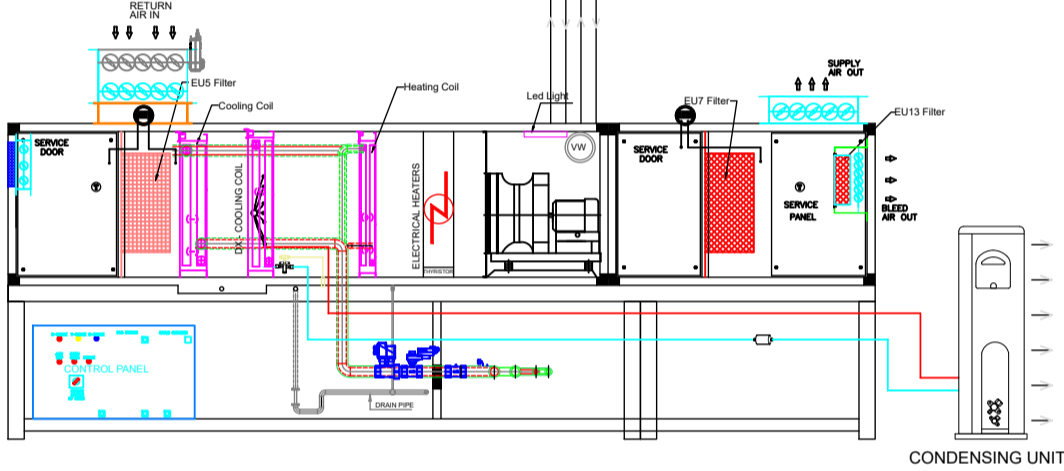
COMMAN UNITLITIES



REGULAR AHU

- STANDARD AHU
- NEED UTILITIES CHILLED AND HOT WATER

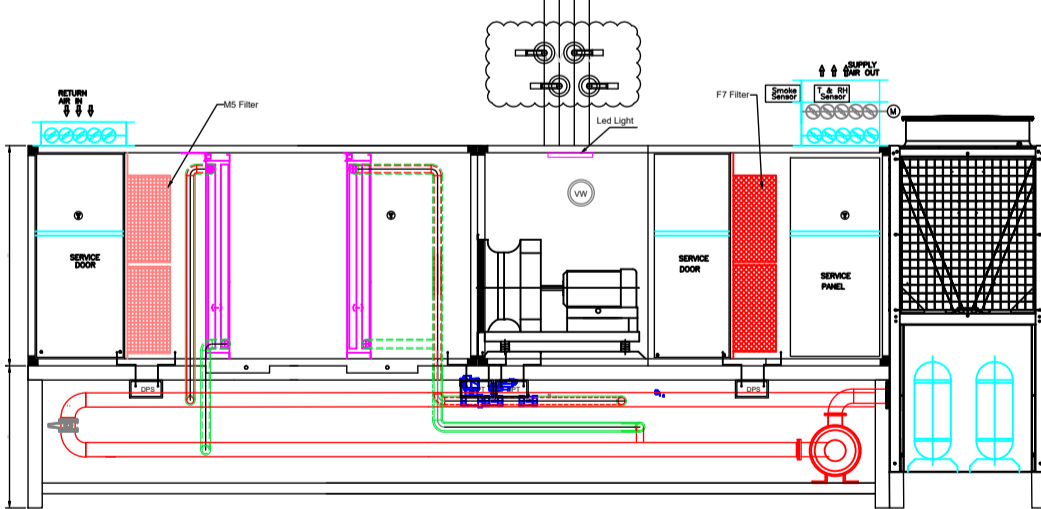
COMMAN UNITLITIES



AHU WITH DX-COIL


- DX-UNIT SHALL BE INSTALLED AWAY FROM AHU
- HEATERS REQUIRED TO MAINTAIN RELATIVE HUMIDITY

COMMAN UNITLITIES



HYBRID AHU

- FLEXIBLE
- MORE ACCURATE RESULTS
- REHEAT IS FREE
- WELL SUITABLE FOR CRITICAL OPERATIONS

 <b>PR PHARMA ENGINEERS PVT.LTD.</b> PLOT.NO:113/A/1,LANE.NO:8,PHASE-II, IDA,CHERLLAPALLY,HYDERABAD-51				
CLIENT :- REFERENCE				
PROJECT:- INTERNAL				
TITLE: HYBRID AHU			DWG NO: REFERENCE/01	
DRN BY	CHK BY	APPD BY	DATE	REV.
PRK	PR		27.05.24	RO